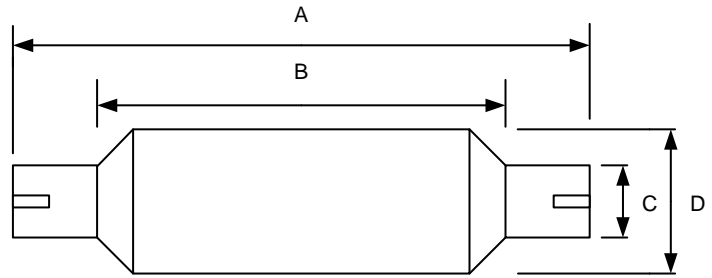


### Price List 2011

Standard slotted joint units  
 ATEX approved (EN1834) stainless steel  
 Supplied with ID plate and Certified  
 Twin centrifuge design  
 Bespoke systems available  
 Available in Mild Steel painted heat resistant black  
 Manufactured in the UK



Engine Powers (HP)		Material	Weight (kg)	A (mm)	B (mm)	C (Inches)	D (mm)	Part Number	Price
n/a	Turbo								
10 - 45	-	Mild Steel	1.8	490	305	1.25 - 2.00	92	570045	£117.88
10 - 45	-	Stainless	1.8	490	305	1.25 - 2.00	92	580045	£158.88
25 - 80	-	Mild Steel	3.3	650	460	2.00 - 2.75	125	570090	£138.38
25 - 80	-	Stainless	3.3	650	460	2.00 - 2.75	125	580090	£194.75
50 - 100	-	Mild Steel	2.4	765	585	2.00 - 3.00	150	570100	£143.50
50 - 100	-	Stainless	2.4	765	585	2.00 - 3.00	150	580100	£210.13
75 - 100	75 - 150	Mild Steel	3.5	850	665	2.00 - 3.50	150	570150	£179.38
75 - 100	75 - 150	Stainless	3.5	850	665	2.00 - 3.50	150	580150	£251.13
120 - 180	110 - 160	Mild Steel	4.5	850	665	3.00 - 4.00	150	570180	£194.75
120 - 180	110 - 160	Stainless	4.5	850	665	3.00 - 4.00	150	580180	£271.63
175 - 250	140 - 200	Mild Steel	4.5	850	665	3.00 - 4.00	200	570250	£261.38
175 - 250	140 - 200	Stainless	4.5	850	665	3.00 - 4.00	200	580250	£358.75
225 - 300	175 - 250	Mild Steel	2.4	1110	910	4.00 - 4.50	200	570300	£348.50
225 - 300	175 - 250	Stainless	2.4	1110	910	4.00 - 4.50	200	580300	£451.00
260 - 350	215 - 300	Mild Steel	3.5	1320	1110	4.00 - 5.00	235	570350	£481.75
260 - 350	215 - 300	Stainless	3.5	1320	1110	4.00 - 5.00	235	580350	£604.75
300 - 400	275 - 325	Mild Steel	4.5	1320	1110	4.00 - 5.00	235	570400	£492.00
300 - 400	275 - 325	Stainless	4.5	1320	1110	4.00 - 6.00	235	580400	£615.00
350 - 500	300 - 400	Mild Steel	4.5	1120	900	4.00 - 5.00	235	570500	£512.50
350 - 500	300 - 400	Stainless	4.5	1120	900	4.00 - 6.00	235	580500	£645.75

Prices exclude VAT and Delivery. Prices valid until December 2011.

**www.gencat.co.uk**  
**Tel: +44 (0)20 8450 6160 Fax: +44 (0)20 8452 2822**